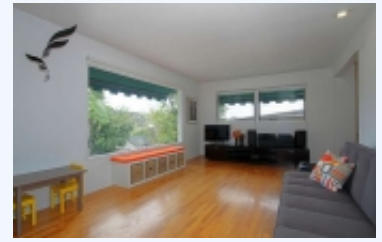


CHARMING 1950S ADAMS HILL HOME FOR SALE

Sold. \$ 551,155.00



1229 E Palmer Avenue, Glendale, 91205

Charming 1950s home with modern conveniences in the sought-after Adams Hill neighborhood of Glendale. Removed from the hustle and bustle of downtown, come home to enjoy the peace and quiet of your very own hillside retreat. Compact and bright, this is a great place to start or continue your real estate empire. There are updates throughout, including modern fixtures in the bath, newer central air and heat, copper plumbing, updated electrical, and a finished 1-car garage currently used as a home office. The original 1950s charm is also present, with crisp, clean lines, gleaming hardwood floors, sunny yellow kitchen tile, and ample windows to take in the views. The low maintenance back yard has fruit trees, blooming bougainvillea, tropical landscaping and a spacious back deck to complete your private paradise. The surrounding neighborhood of Adams Hill (named by Los Angeles Magazine as one of the "10 Great Neighborhoods of Los Angeles") is the next hip place to be discovered. Just down the street is the Adams Square Mini Park, Art's Bakery, and the shops at Adams Square. Take a short jaunt to the Americana for shopping or dining, or head over to nearby York Blvd or Atwater Village for the latest restaurants and boutiques. Sold on May 7, 2014 for \$551,155. We received 6 offers on this home.

BASE INFORMATION:

Bed : 2
Bath : 1

LAND INFORMATION:

Square feet : 894

CONVENIENCE: