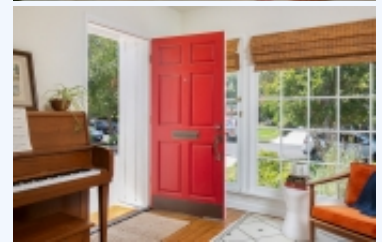


# SOLD! CHARMING 1930S COTTAGE IN STUDIO CITY!

Sold. \$ 1,530,000.00



## 4152 Wilkinson Avenue, San Fernando Valley, 90041, Studio City

Sold! Timeless 1930s cottage in prime Studio City now available with two bedrooms, two baths, lush backyard and separate studio with bath.

Sold! On a tree-lined street in coveted Footbridge Square, this timeless 1939 cottage offers an ideal combination of modern updates with original charm and character. The sunlit living room is lined with built-in bookshelves, and features large windows and a brick fireplace. The formal dining room leads to a kitchen updated with stone counters, new tile backsplash, and stainless steel appliances. A pass-through opens onto the den, which also enjoys a fireplace and double doors to the very private and spacious backyard. The main bedroom suite is a peaceful retreat with vaulted ceiling, window seat overlooking the lush backyard, and French doors leading to the lush garden. The beautifully landscaped yard has two separate patios and a lawn area surrounded by mature hedges, three citrus trees, camellia, roses and jasmine. A separate detached studio with bath is perfect for studio, office or guests. Ideally located south of Moorpark in the award-winning Carpenter School District, this home is in prime Studio City with easy access to shops, restaurants, and more!

### BASE INFORMATION:

Bed : 2  
Bath : 2

### LAND INFORMATION:

Square feet : 1529  
Lot Size : 7001

### BUILDING INFORMATION:

House Style : Cottage  
Flooring : Hardwood  
Built on : 1939  
Number of Floors : 1  
Floor area (Total) : 1529

### CONVENIENCE:

#### General Amenities:

Refrigerator, Oven, Office/Den, Master Bathroom, Living Room, Laundry Room, Kitchen, Hardwood Floors, Ensuite Bathroom, Dining Room, Breakfast Nook,  
**Appliance Amenities:** Stainless Steel Appliances, Range/Oven, Dishwasher,  
**Energy Savings Amenities:** Fireplace,  
**Exterior Amenities:** Open Patio, Garage - Detached, Fruit Trees, Fence, Covered Patio,  
**Interior Amenities:** Central Heat, Central Air,  
**Landscape Amenities:** Yard, Washer/Dryer, Lawn, Landscaping,